



Some Extra Peds Stuff!

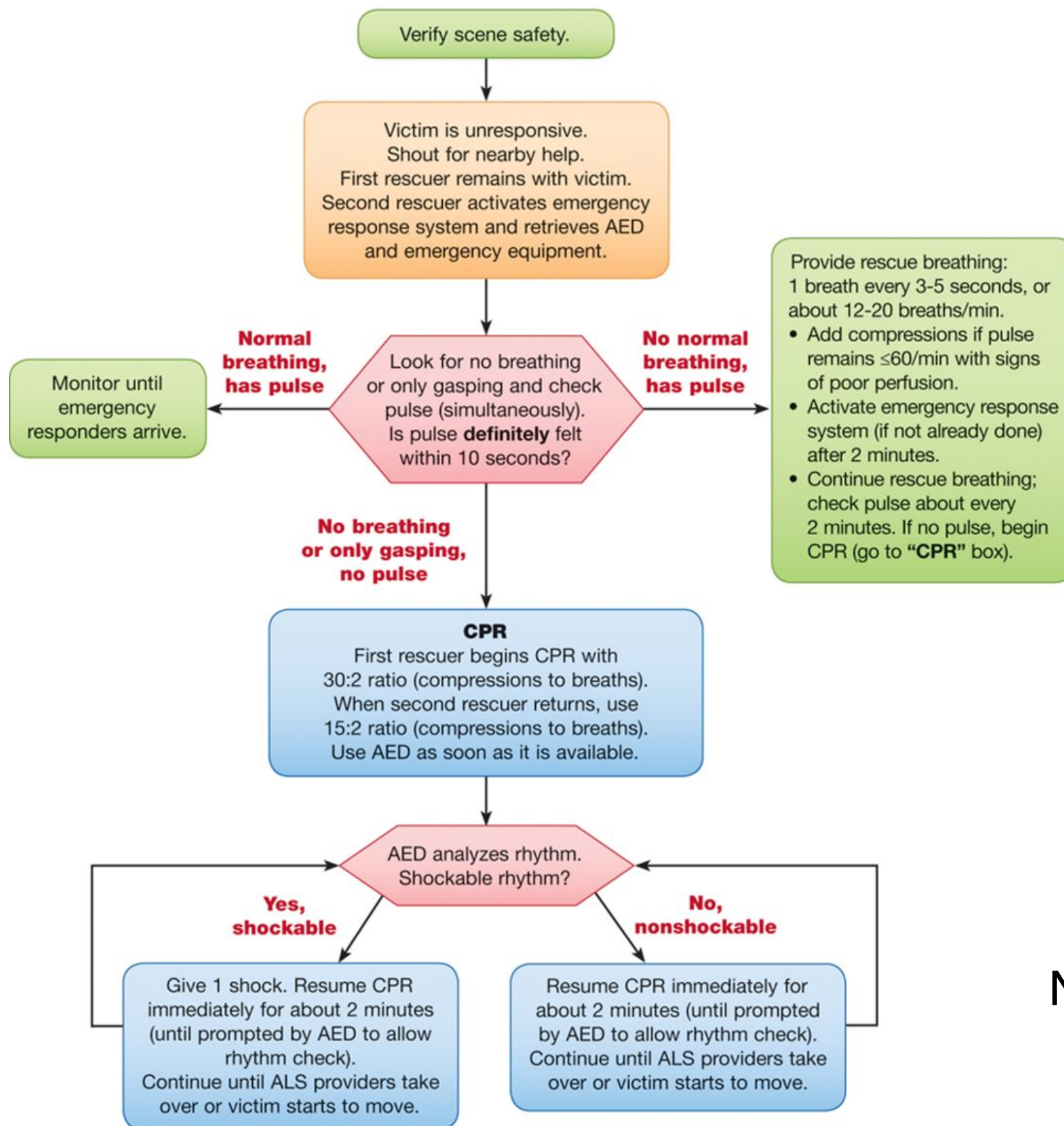
Scott R Snyder BS, NREMT-P
*Santa Rosa Jr College
Public Safety Training Center*

Question 1

A 3 month-old male presents unconscious with atonal breathing and a heart rate of 50/min.
You should:

- A. provide rescue breaths.
- B. initiate chest compressions.
- C. determine the blood pressure.
- D. perform 5 chest thrusts.

BLS Healthcare Provider
Pediatric Cardiac Arrest Algorithm for 2 or More Rescuers—2015 Update

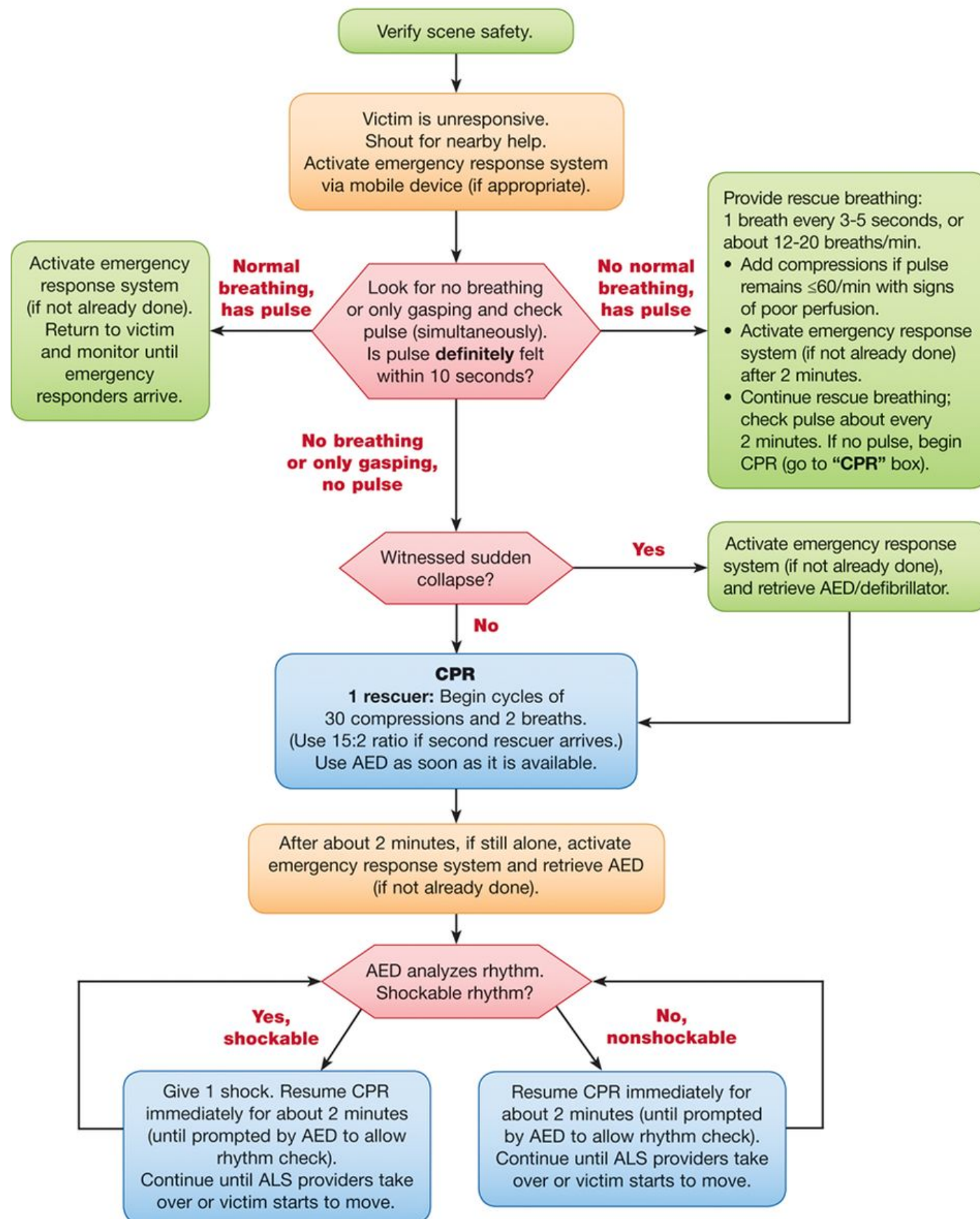


High-Quality CPR

- Rate at least 100/min
- Compression depth to at least $\frac{1}{3}$ anterior-posterior diameter of chest, about 1½ inches (4 cm) in infants and 2 inches (5 cm) in children
- Allow complete chest recoil after each compression
- Minimize interruptions in chest compressions
- Avoid excessive ventilation

Note that CPR is started with HR < 60/min!

**BLS Healthcare Provider
Pediatric Cardiac Arrest Algorithm for the Single Rescuer—2015 Update**



Question 2

A 10 month-old male presents in mild distress and slight inspiratory stridor after swallowing a marble. You should:

- A. administer 5 chest thrusts.
- B. perform 30 chest compressions.
- C. perform the Heimlich maneuver.
- D. administer blow-by oxygen.

Peds FBABO: Conscious

- Mild? Do Nothing!
- OK, if you want to do something, administer blow-by oxygen as long as it does not agitate the patient!
- Severe? Do Something!

Question 3

A 8 month-old male presents conscious, cyanotic, and apneic after swallowing a grape. You should:

- A. administer 5 chest thrusts.
- B. perform 30 chest compressions.
- C. perform the Heimlich maneuver.
- D. administer blow-by oxygen.

Peds FBABO: Conscious

- Severe FBABO:
 - Child: Heimlich maneuver till object dislodged
 - Infant: repeated cycles of 5 back blows & 5 chest thrusts till object dislodged
- Pt goes unresponsive?

Question 4

A 8 month-old male presents conscious, cyanotic, and apneic with a FBAO. He suddenly becomes unconscious. You should:

- A. administer 5 back blows.
- B. perform 30 chest compressions.
- C. perform a finger sweep.
- D. ventilate with a BVM.

Peds FBABO: Unconscious

- If patient becomes/presents unresponsive with FBABO:
 - CPR (no pulse check required)
 - After 30 compressions, open airway, look for FBABO
 - See it? Remove it!
 - Attempt 2 breaths, then continue cycle

Finger Sweep

- When?



Finger Sweep

- When?
- Blind finger sweep = never.
- See the object? Perform a finger sweep.

ALTE: NIH Definition

"An apparent life-threatening event (ALTE) is defined as an episode that is frightening to the observer and is characterized by some combination of apnea (central or obstructive), color change (cyanotic, pallid, erythematous or plethoric) change in muscle tone (usually diminished), and choking or gagging. In some cases, the observer fears that the infant has died."