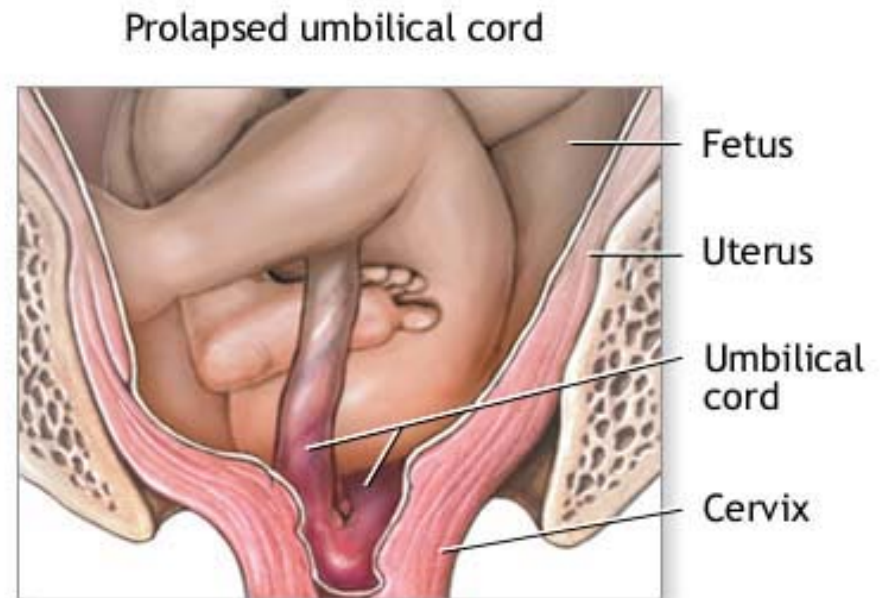


Complications of Childbirth

Scott R Snyder

Prolapsed Cord

- Umbilical cord presents first
- Danger of infant compressing cord during birth, cutting off circulation & oxygen supply
- Administer oxygen



Prolapsed Cord: Treatment

- Administer oxygen
- Instruct mother to NOT push
- Patient in knee-chest position
- Insert hand into vagina to keep fetus off of cord
- Cover cord with moist, sterile dressing



Knot in Cord



Knot in Cord

- Issue = decreased blood flow to fetus
- Treatment = none!



Nuchal Cord

- Issues
 - cord shortened = placental/cord trauma during birth
 - decreased blood flow to fetus



Nuchal Cord

- Remove cord from around neck
- Or, clamp and cut cord
 - careful!

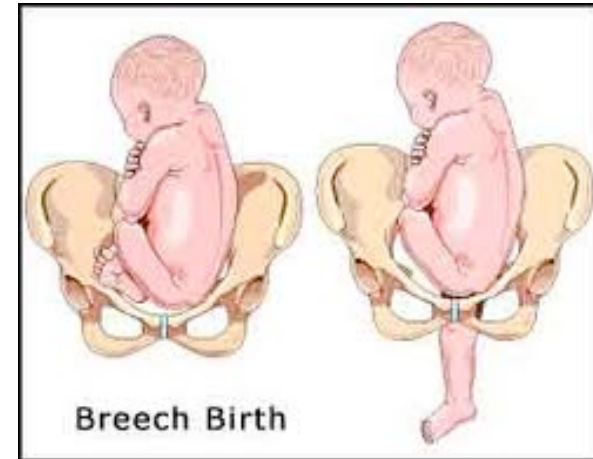


Single Limb Presentation

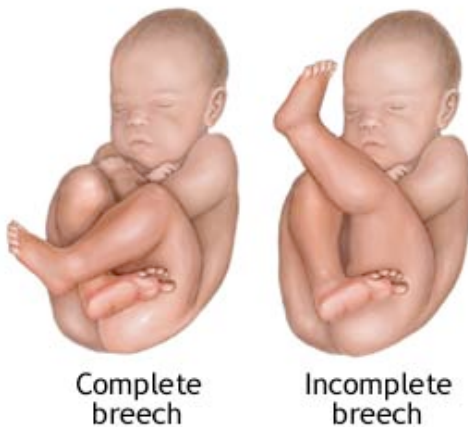
- Cesarean section most likely needed
 - Don't attempt field delivery
- Instruct mother to NOT push
- Administer oxygen

Breech Birth

- Buttocks or lower limbs deliver first
- May interfere with childbirth



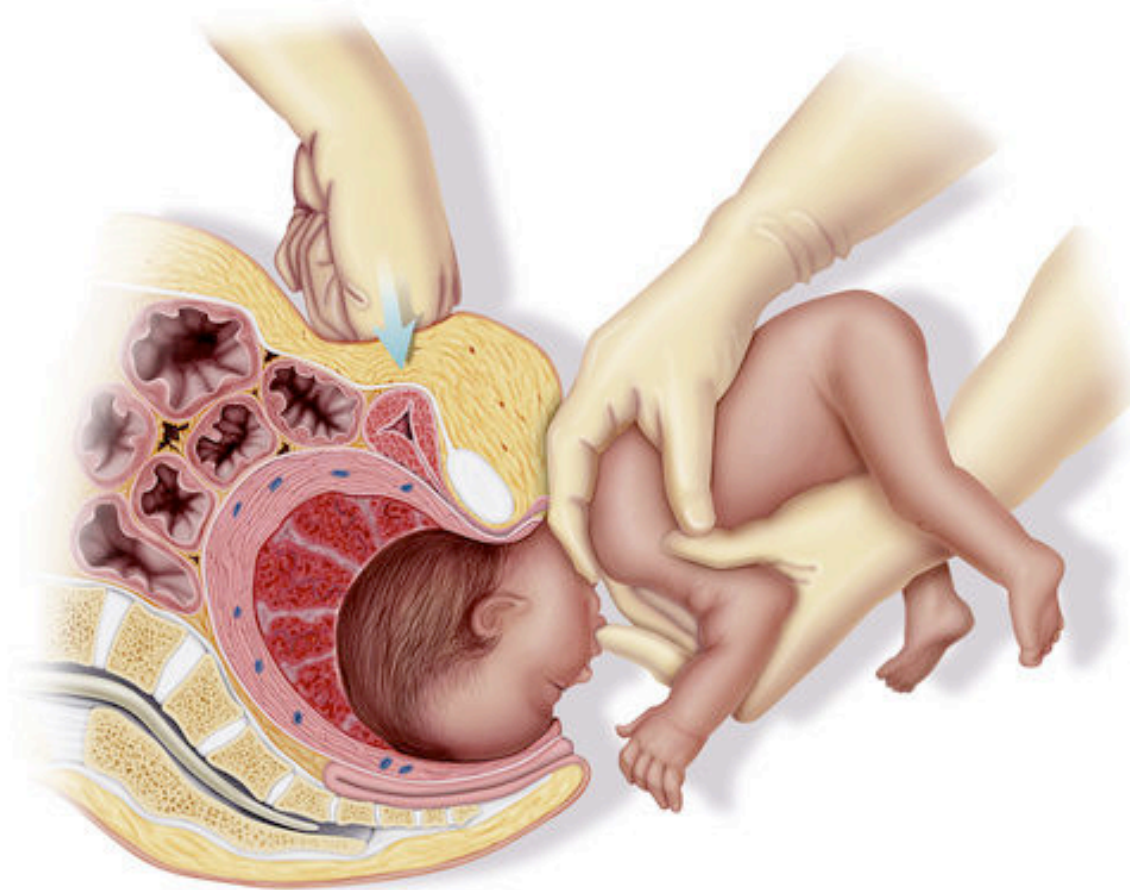
Variations of the breech presentation



Breech Birth



Breech Birth



SCIENCEphotOLIBRARY

Breech Birth



Uterine Rupture

- Uncommon
- During labor, blunt force trauma
- Usually occurs at previous incision site

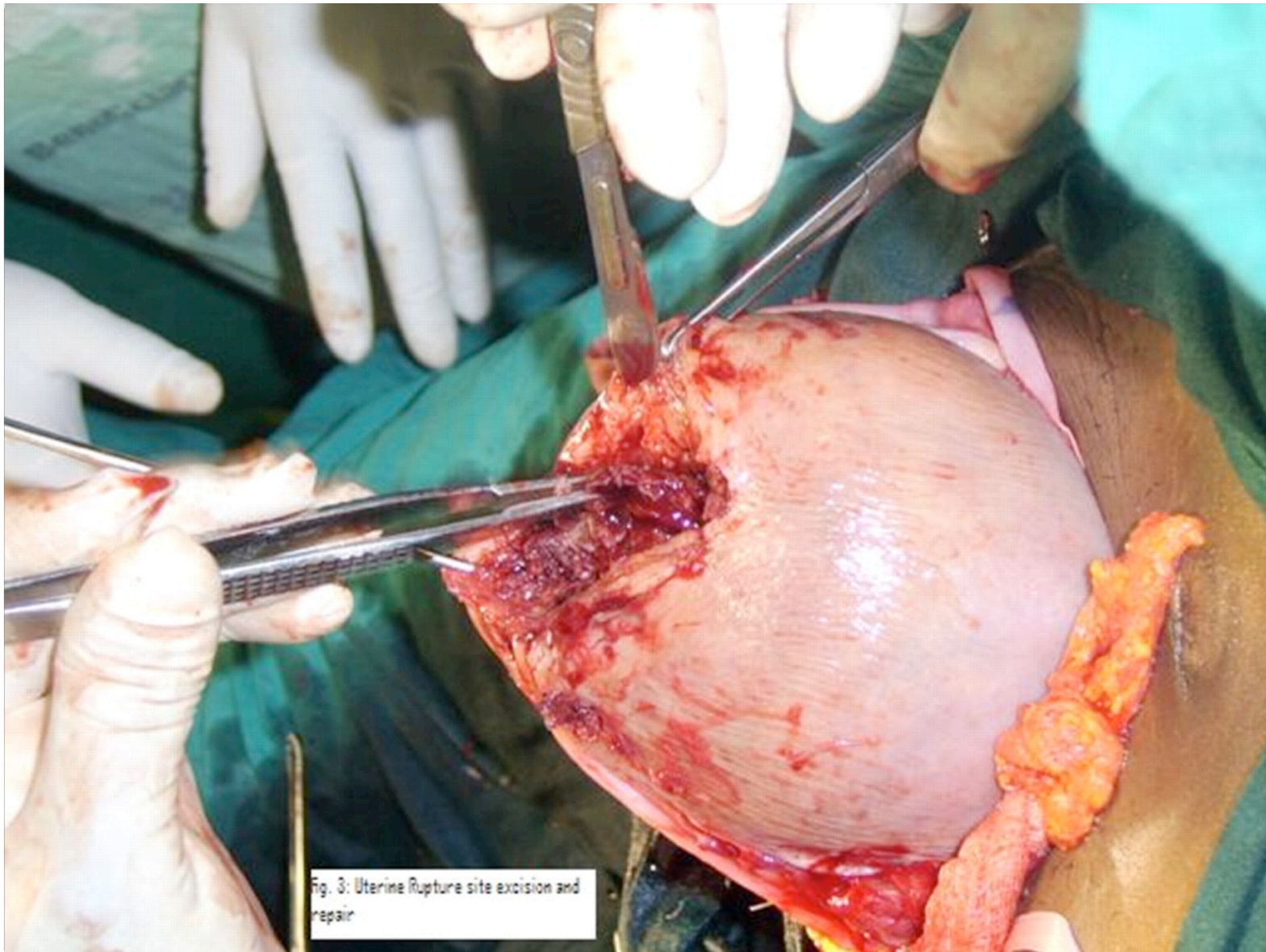
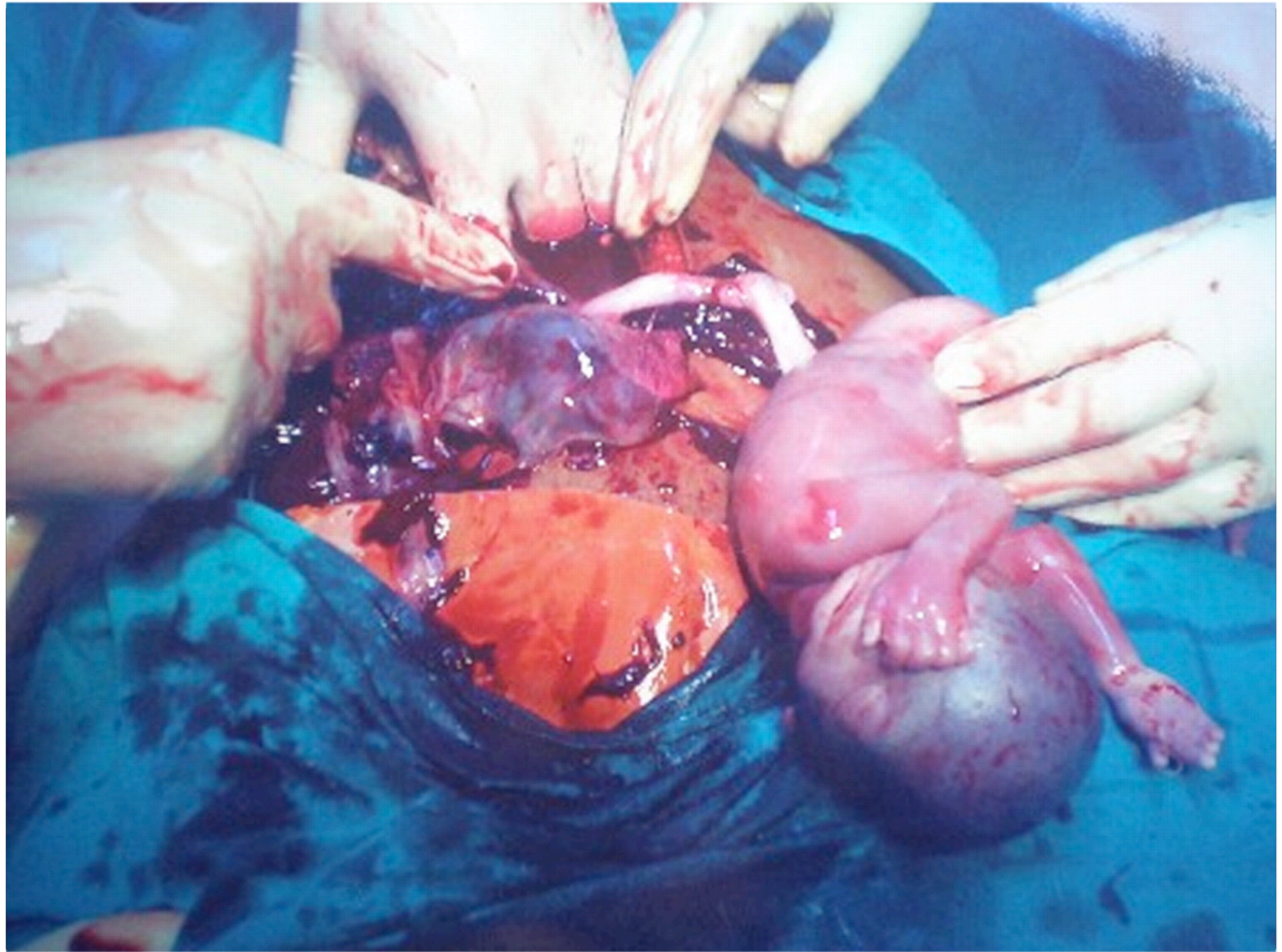


Fig. 3: Uterine Rupture site excision and repair





Intact Amniotic Sac



Intact Amniotic Sac



